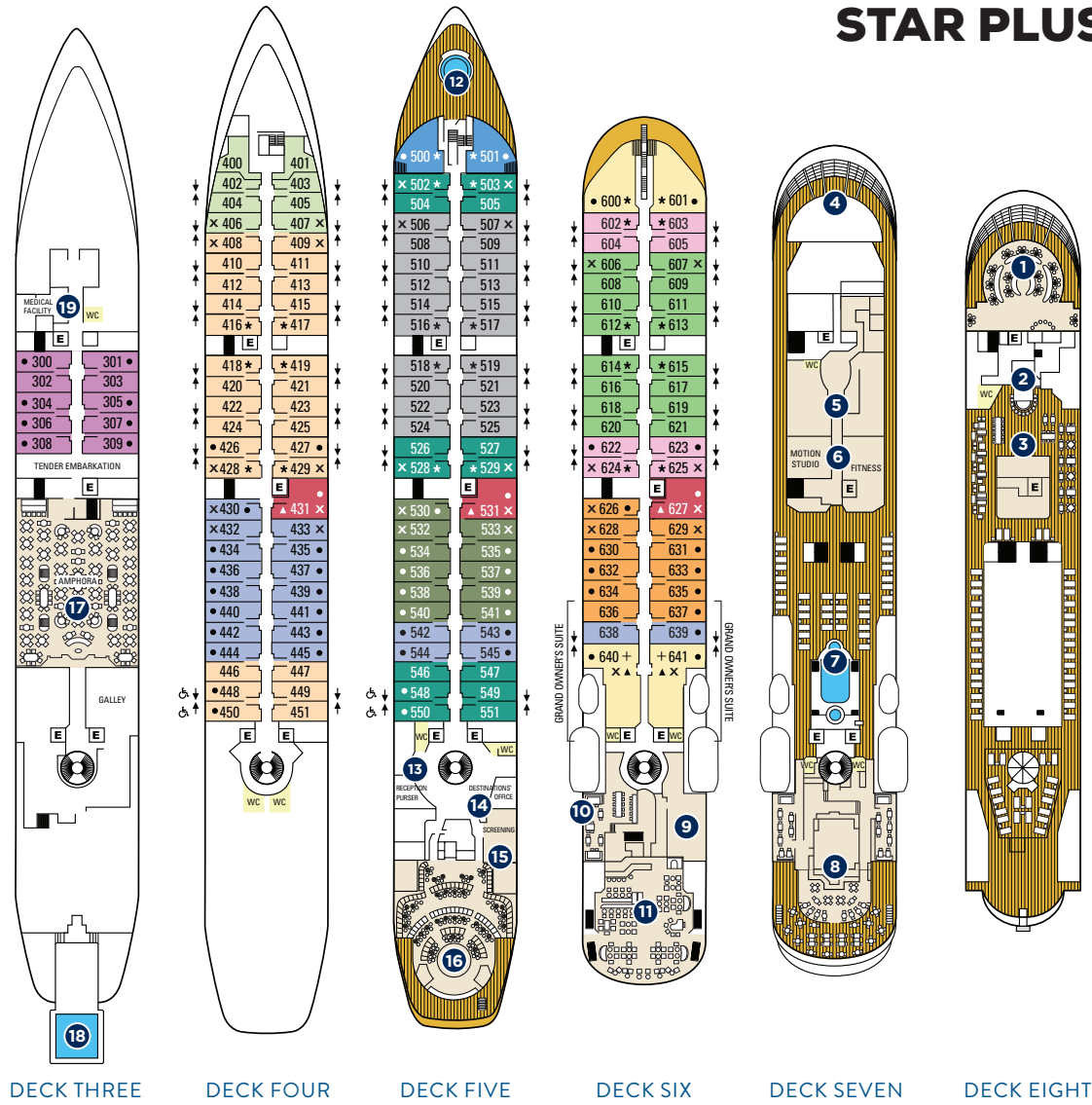


STAR PRIDE, STAR BREEZE, STAR LEGEND TRANSFORMED BY THE \$250 MILLION STAR PLUS INITIATIVE



STAR BREEZE
voyages starting
June, 2021

STAR LEGEND
voyages starting
September, 2021

STAR PRIDE
voyages starting
November, 2021

- + RESTRICTED VIEW
- ↓ ADJOINING SUITES
- E ELEVATOR
- * INCLUDES BATHTUB
- ▲ SEPARATE BATHTUB & SHOWER
- ONE QUEEN SIZE BED ONLY (no twin option)
- x 3RD BERTH AVAILABLE
- ♠ MODIFIED ACCESSIBLE SUITES
Feature a full-size bed (no twin option) Suites 448, 450, 548, & 550 are modified accessible, shower only with a small lip into shower, only one sink, a step into the bathroom with a portable ramp, standard interior and exterior doorways.



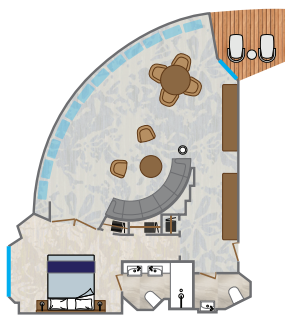
GRAND OWNER'S SUITE

ALL-SUITE SHIPS

Grand Owner's Suites:
3 Bedroom Suites, 640/638/636 or 641/639/637: 1,374 square feet (128 square meters)
Can also be booked as 2 Bedroom Suites, 640/638 or 641/639: 1,097 square feet (102 square meters)
Owner's Suites Midship, 640 and 641 (OW): 820 square feet (76 square meters), both with 3rd berths



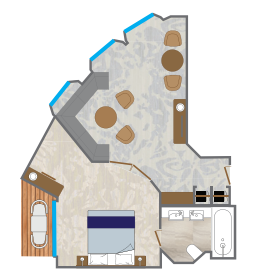
OWNER'S SUITE, MIDSHIP



OWNER'S SUITE, FORWARD*

*Star Pride Owner's Suites are slightly different layout with shower only.

Owner's Suites Forward, 600 and 601 (OW): 575 square feet (54 square meters)
Classic Suites, 500 and 501 (CS): 400 square feet (37 square meters)
Deluxe Suites, 431, 531, 627 (DS): 468 square feet (43.5 square meters), all with 3rd berths. Cabin 431 has two picture windows, excludes balcony
Star Balcony Suites (SBS, SBS1): 277 square feet (26 square meters)



CLASSIC SUITE



DELUXE SUITE



STAR BALCONY SUITE

Star Balcony Suites with 3rd berths — 530, 532, 533, 626, 628, 629
Balcony Suites (BS, BS1): 277 square feet (26 square meters)
Balcony Suites with 3rd berths — 506, 507, 606, 607
Star Ocean View Suites (SS1): 277 square feet (26 square meters)
Star Ocean View Suites with 3rd berths — 430, 432, 433



BALCONY SUITE



STAR OCEAN VIEW SUITE



OCEAN VIEW SUITE



STAR PORTHOLE SUITE

Ocean View Suites (S, S1, S2, S3): 277 square feet (26 square meters)
Ocean View Suites with 3rd berths — 406, 407, 408, 409, 428, 429, 502, 503, 528, 529, 624, 625
Star Porthole Suites (SP): 277 square feet (26 square meters)
All beds convertible to twin beds unless otherwise indicated.

ONBOARD SPACES

- | | | |
|----------------------------------|-------------------------------|-------------------------|
| 1 Yacht Club Café & Library | 7 Pool and whirlpool | 14 Destination Office |
| 2 Star Bar | 8 Veranda/Candles | 15 Screening Room |
| 3 Star Grill by Steven Raichlen | 9 Star Boutique | 16 Lounge |
| 4 Bridge | 10 Cuadro 44 by Anthony Sasso | 17 Amphora Restaurant |
| 5 World Spa by Windstar | 11 Compass Rose | 18 Watersports Platform |
| 6 Fitness Center & Motion Studio | 12 Whirlpool | 19 Medical Facility |

- Owner's Suite (OW)
- Classic Suite (CS)
- Deluxe Suite (DS)
- Star Balcony Suite (SBS1)
- Balcony Suite (BS1)
- Star Balcony Suite (SBS)
- Balcony Suite (BS)
- Ocean View Suite (S3)
- Ocean View Suite (S2)
- Star Ocean View Suite (SS1)
- Ocean View Suite (S1)
- Ocean View Suite (S)
- Star Porthole Suite (SP)

SHIP FACTS

GUEST CAPACITY: 312
GUEST DECKS: 6
CREW MEMBERS: 200
LENGTH: 522 feet (159 meters)
BEAM: 62 feet (19 meters)
DRAFT: 17.7 feet (5.4 meters)
CRUISING SPEED: 15 knots

PROPULSION: Twin propeller, driven by two Wartsila diesel engines
TONNAGE: 12,995 gross registered tons (grt)
SHIP'S REGISTRY: Bahamas



• Access to board ship is via stairs only.
• Access to/from outside deck may require assistance with doors and thresholds.